

# Better Than Basic Chalk Bag

By: Tram Dang

**TERMS OF USE:** This pattern is protected by the Creative Commons license (CC). You are welcome to freely distribute and modify the content; however use of the pattern is limited to personal use only (no commercial use!) More information regarding CC can be found at <http://creativecommons.org>.



## You will need:

*Notions:*

- 16" nylon strap
- 10" 1/2" nylon strap
- 1 yard nylon cording (elastic cord works well, too)
- 1 cording/drawstring stop
- 1 grommet
- 2 inches nylon cording (optional, for brush)
- 16" or longer cable/zip tie (optional)

- Fabric (either 45" or 60" wide is fine):*
- 8" wide strip fleece (chalk bag inner)
  - 8" wide strip heavyweight fabric (chalk bag outer)
  - 5" wide strip for chalk cover

## Cut the following pieces:

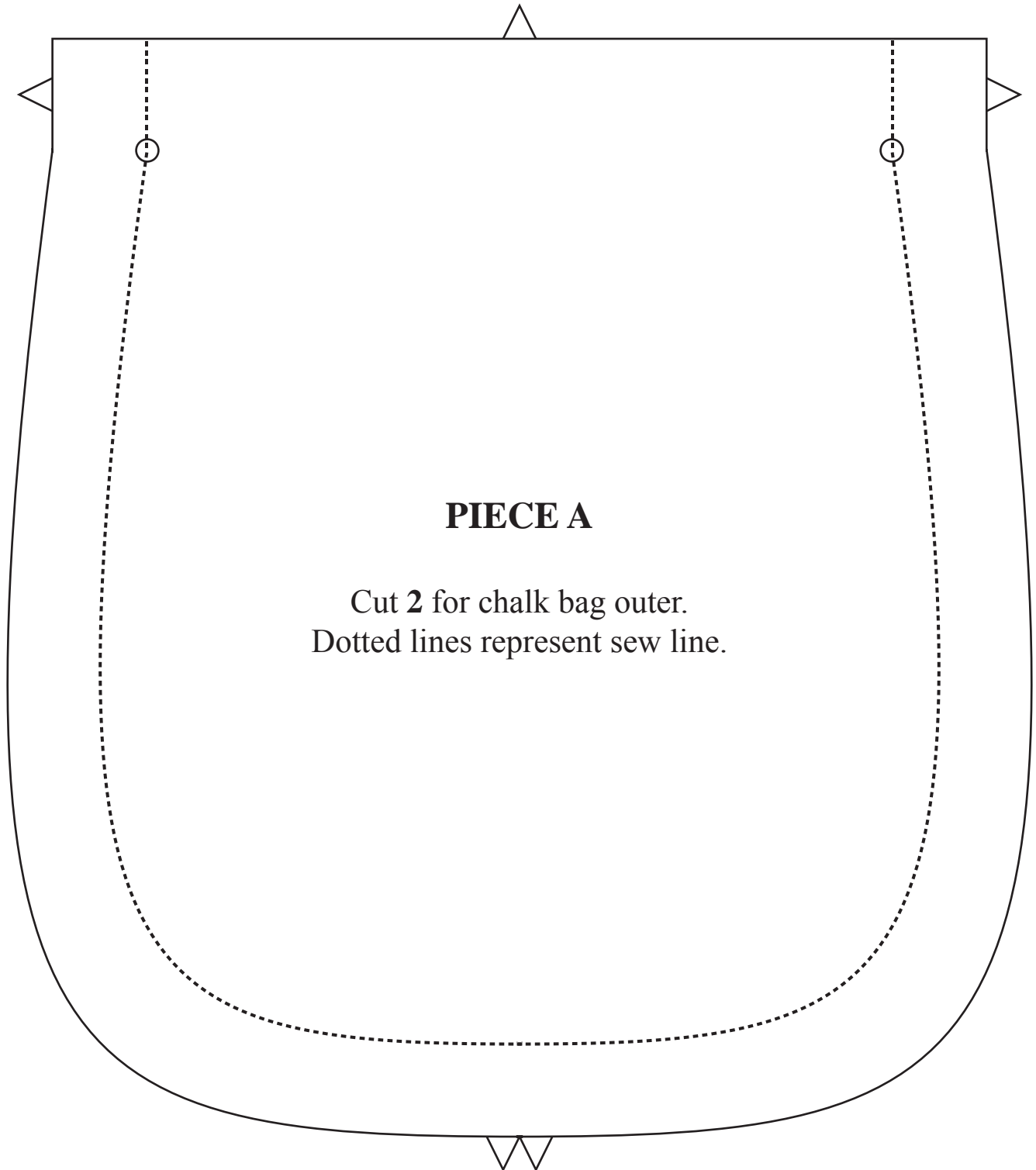
Please see accompanying pages for pattern

	Description	A	B	C	D
Outer	Heavyweight fabric, can be printed	x2		x1	
Inner	Fleece		x2	x1	
Chalk cover	Heavyweight black fabric works well, jersey fabrics, or nylon				x1

# Better Than Basic Chalk Bag

By: Tram Dang

For all hems, use 5/8" allowances unless otherwise noted.



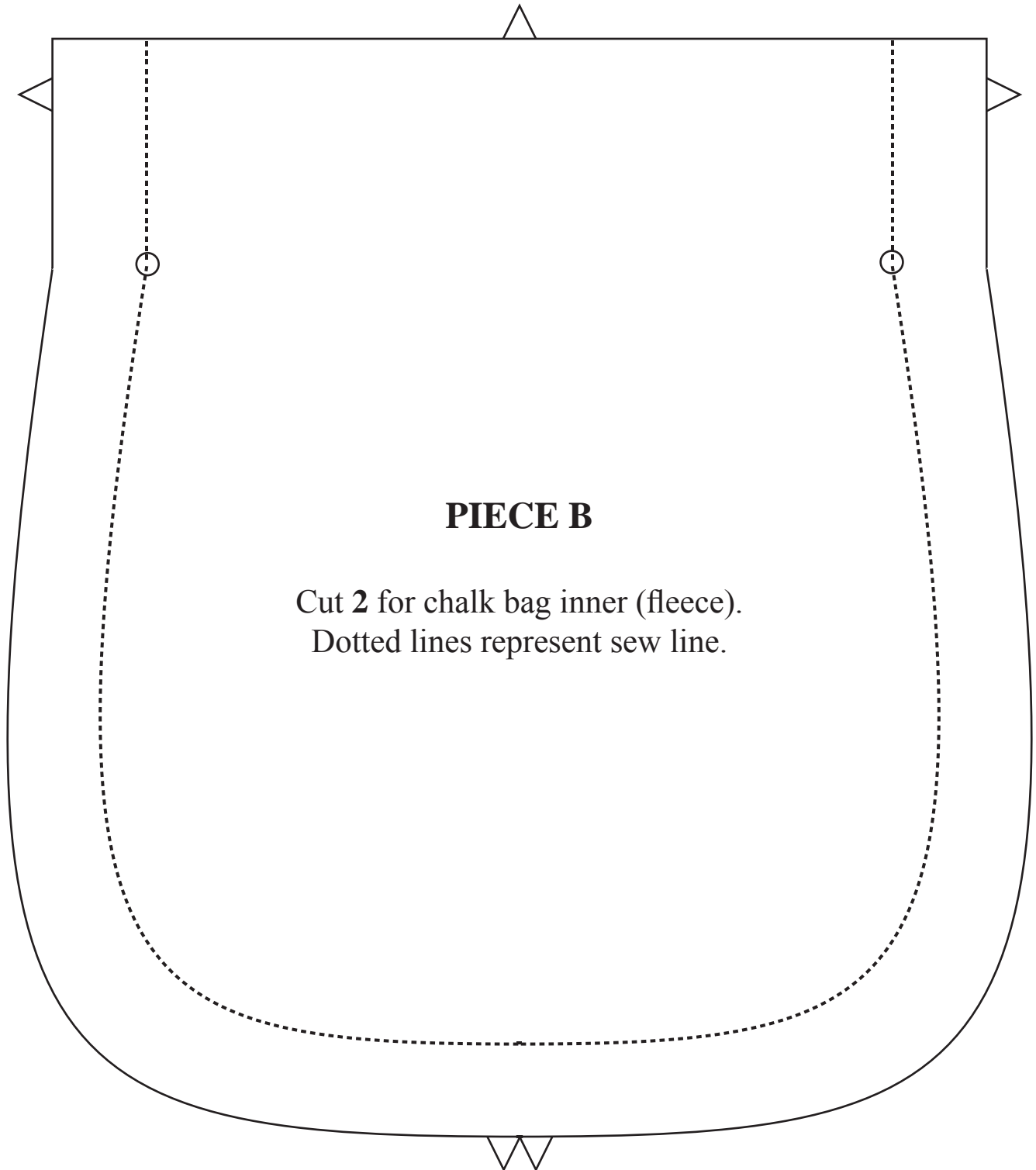
## PIECE A

Cut 2 for chalk bag outer.  
Dotted lines represent sew line.

# Better Than Basic Chalk Bag

By: Tram Dang

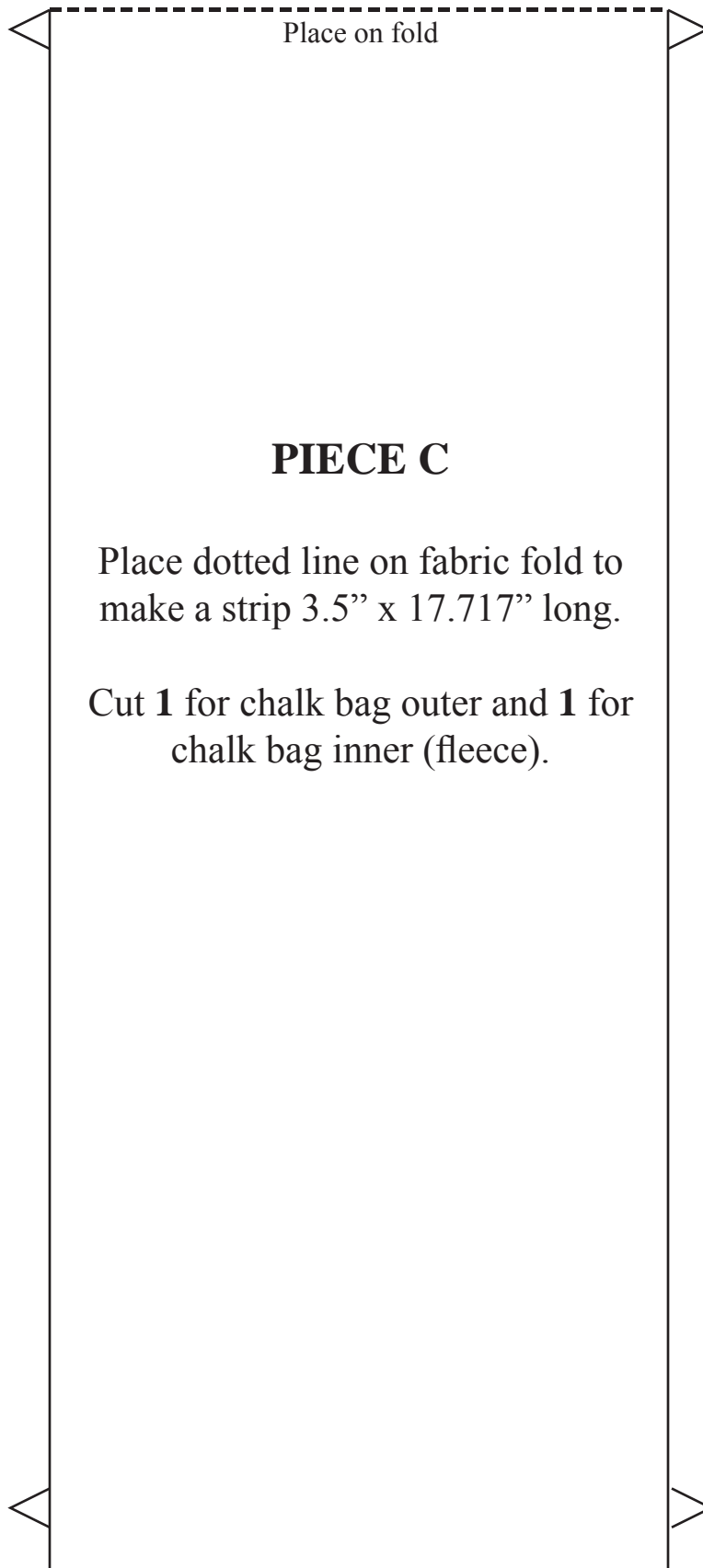
For all hems, use 5/8" allowances unless otherwise noted.



# Better Than Basic Chalk Bag

By: Tram Dang

**For all hems, use 5/8" allowances unless otherwise noted.**



# Better Than Basic Chalk Bag

By: Tram Dang

**For all hems, use 5/8" allowances unless otherwise noted.**

Place on fold



## **PIECE D**

Place dotted line on fabric fold to  
make a strip 5" x 15.75" long.

Cut **1** for chalk cover.

# Better Than Basic Chalk Bag

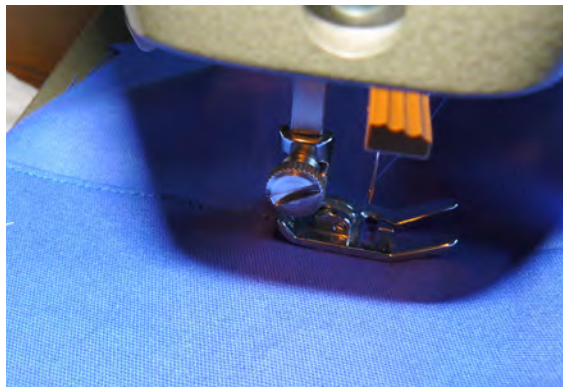
By: Tram Dang

**For all hems, use 5/8" allowances unless otherwise noted.**

STEP 1: Sew the outer pieces A and C together. Make the seam on the wrong side of the fabric. Use the triangle markers to correctly line your pieces. For this part, it is recommended that you pin the pieces together before sewing.



STEP 1A (optional): Add a second stitch along the seam to hold down the fabric. I always turn the excess fabric towards the long center strip and stitch one line down.



STEP 2: Clip the excess fabric around the seams at the corners of the bag. This will help the bag keep its shape when flipped right-side out.



STEP 3: When you've sewn the three pieces together, flip it right side out, et voilet! (Note that this bag was a gift for a Swedish friend. The flag pattern is not shown in this diagram. At least it will be easy to distinguish the front and back of the bag!)





# Better Than Basic Chalk Bag

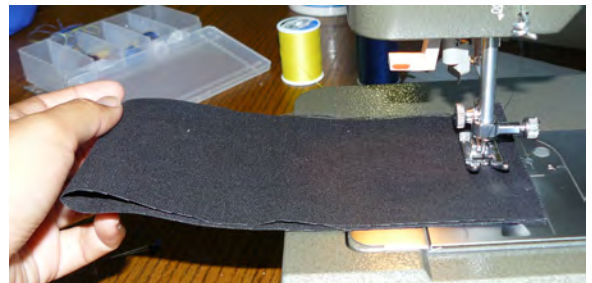
By: Tram Dang

**For all hems, use 5/8" allowances unless otherwise noted.**

STEP 4: Repeat Steps 1-3 with the inner chalk bag fabric (pieces B, C). Skip Step 1A.



STEP 5: Fold the chalk cover fabric (piece D) in half and hem,



STEP 5A (optional): I like to add stitches alongside the seam (like in Step 1A). For this piece, I fold the fabric at the seams away from each other and then do two rows of stitches,



STEP 6: Flip the fleece so that the seams are inside. Slide the chalk cover fabric over the fleece with the seams on the outside. Position the chalk cover so that it is sitting 1.5" below the open end of the fleece (be sure that the chalk cover seam is centered by aligning it under one of the triangle markers). Stitch together, 0.5" away from the top of chalk cover edge. (You may wish to double-stitch this for extra strength.)



# Better Than Basic Chalk Bag

By: Tram Dang

**For all hems, use 5/8" allowances unless otherwise noted.**

STEP 6: Flip the fleece back so that the seams are now facing out. Slide the fleece into the outer section. Make sure that the chalk cover seam is towards the back of the chalk bag. Use the markers to align the two pieces. Baste the top edge together at about 0.25" from the edge.



STEP 7: Cut a small hole on the right side of the bag about 1.5" down from the top edge. (If you are left-handed, you might wish to cut the hole on the left side.) Attach a grommet through the hole.



STEP 8: Flip the chalk cover up so that it creates a tube. Wrap the cord around the chalk cover twice and insert the ends into the grommet. Attach the cord stop, and tie a knot so that the cord stop will not slip off. (It is recommended that you melt the end of the cord so that it does not unravel.)





# Better Than Basic Chalk Bag

By: Tram Dang

**For all hems, use 5/8" allowances unless otherwise noted.**

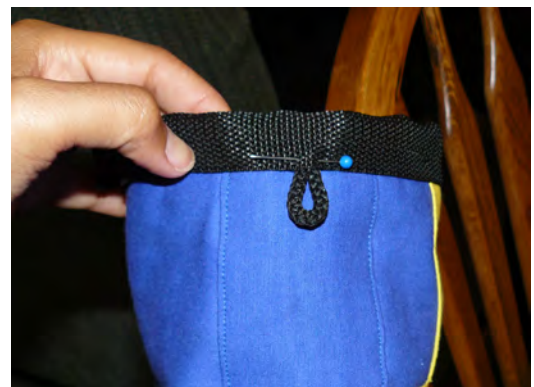
STEP 8: Align the top edge of the chalk cover to the top edge of the chalk bag. Baste, again at around 0.25" from the edge,



STEP 8: Using the 1.5" wide web strapping, fold the webbing over the edge of the chalk bag and pin.



STEP 8A (optional): If you would like to attach a loop so you can hold a small brush, pin a loop using 2" of cording onto the side that is opposite the drawstring cord.



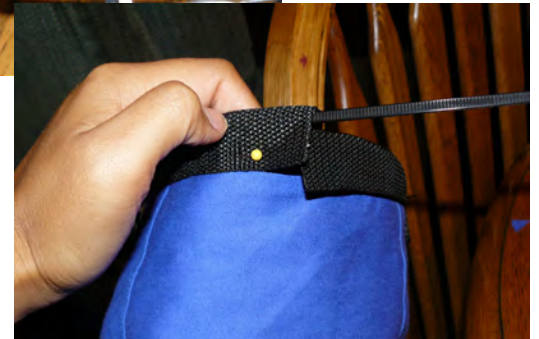
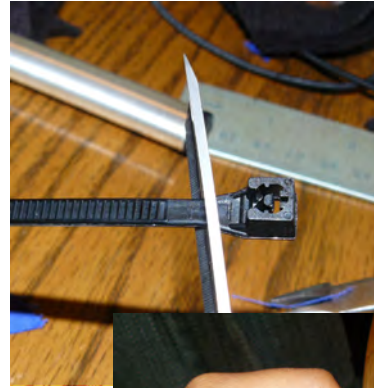
STEP 9: (Sorry, no picture!) If you'd like to add some rigidity to the top edge of the chalk bag, move on to Step 9A. Otherwise, sew the web strap onto the chalkbag. I usually sew this about 0.25" away from the edge of the strap (and often sew another row for added measure). Then go onto Step 10.

# Better Than Basic Chalk Bag

By: Tram Dang

**For all hems, use 5/8" allowances unless otherwise noted.**

STEP 9A: Snip off the head of a cable tie that is at least 16" long. Slip the cable tie between the strapping that has been pinned to the chalk bag. You can add another cable tie if you would like more rigidity. Sew the strap onto the chalkbag. I usually sew this about 0.25" away from the edge of the strap (and often sew another row for added measure). **BE SURE NOT TO HIT THE CABLE TIE!!**



STEP 10: Cut two 5" lengths of 0.5" web strap (you can also use one length of wide strapping). Fold them over and pin them on the back side of the chalk bag in your desired location. Sew them on -- it's a good idea to make many passes when sewing them on. Note that this is basically where my sewing machine poops out; unless you have an industrial one, you most probably will have to sew them on by hand.



**AND YOU'RE DONE!!**